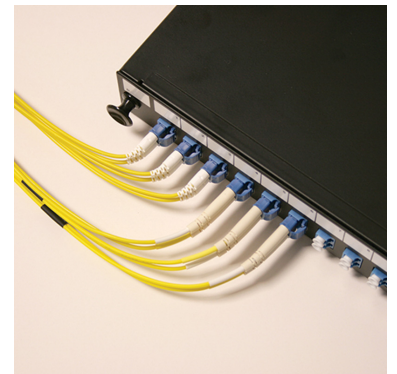


# OS1 OS2 G657 LC Enhanced Short Boot Patch Cords



LC enhanced patch cords supplied with a short boot are ideal for high density applications with tight space requirements. The connector length from tip to boot assembly is only 40 mm, compared to 66 mm for standard LC - 40% shorter! These patch cords have the added benefit of being supplied with reduced bend sensitivity ITU-T G.657 single mode optical fiber which exhibit much lower optical power loss under bend conditions while remaining compatible with conventional cabling. LC short boot patch cords are designed to meet IEC or BS EN requirements.

## FEATURES/BENEFITS

- Short length - allows up to 40 mm space between rack and closed cabinet door - 25 mm extra!
- Enhanced flexibility of the boot maintains minimum bend radius
- No heatshrink system - improved cable flexibility
- Cable dimensions of 2.0 mm, 1.8 mm, 1.6 mm for optimizing air flow space

## APPLICATIONS

- Central Office
- Passive Optical Networks (PON)
- FTTx
- CATV / VIDEO
- WDM / DWDM
- Data centers
- LAN and WAN

**SPECIFICATIONS**

**Connector Specification**

OPTICAL PERFORMANCE	SINGLE MODE	CONFORMANCE
IL Max/Master (Acceptance)	0.25 dB	IEC 61300-3-4
Ave/Master	0.18 dB	IEC 61300-3-4
Ave/Random	0.18 dB	IEC 61300-3-34
Return Loss UPC/APC	55/65 dB	IEC 61300-3-6

**Cable Specification**

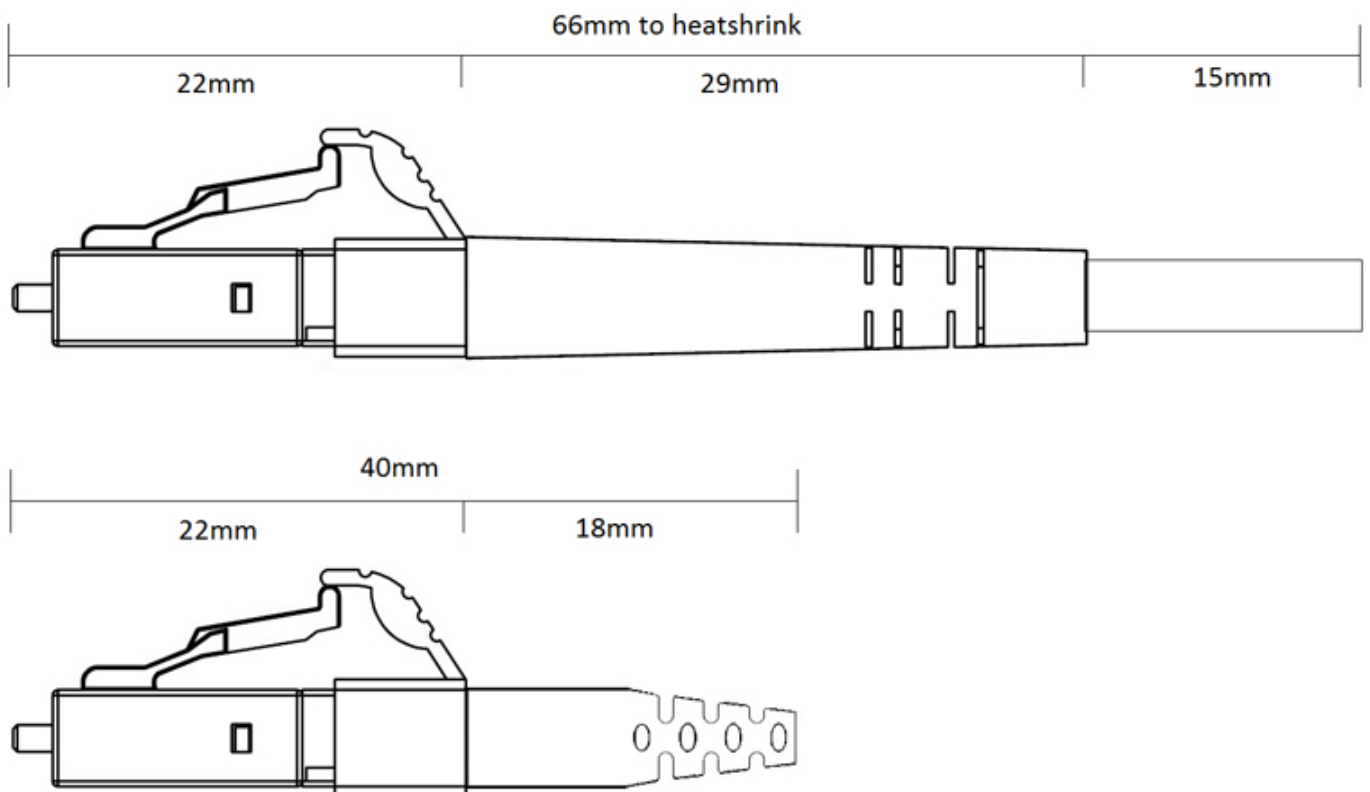
CHARACTERISTICS	SIMPLEX / DUPLEX
Cable Material*	LSZH
Strength Member	Aramid
Crush (N)	1000
Operating Temperature (°C)	-20 to 60
Fire Specification	IEC 60332-1

\*PVC (RISER) also available

**Fiber Specification**

CHARACTERISTICS	
Attenuation (dB / km)	0.38 @ 1310 nm / 0.25 @ 1550 nm
Chromatic Dispersion (ps/nm x km)	3.0 @ 1310 nm / 18.0 @ 1550n m

**TECHNICAL DRAWING**



ORDERING INFORMATION

Code	Fibre Type	Cable Type	Jacket Material	Code	End A	End B	Code	Unit	Length
P	7 G.657A1	AF1 Simplex 1.6mm	L LSZH	9E	A LC	A LC	-0008-	M Meters	1 1
	8 G.657A2	AH1 Simplex 2mm	R OFNR		B LCA	B LCA		F Feet	2 2
	B G.657B3	AO2 ZIP 1.6mm			D SC	D SC			3 3
		AQ2 ZIP 2mm			E SCA	E SCA		5 5	
									10 10
									XX Specify

Legacy ordering information

Connector End A		Connector End B		Fiber Type	Cable Configuration	Cable Colour	Cable Diameter	Cable Length
LCS	LC Short Boot	LCS	LC Short Boot	7A1 G.657A1	D Duplex	YE Yellow	1.6MM 1.6mm	1 1 metre
LCAS	LC APC Short Boot	LCAS	LC APC Short Boot	7A2 G.657A2	S Simplex		1.8MM 1.8mm	2 2 metre
		LC	LC	7B3 G.657B3	DL Duplex LSZH-3		[leave blank] 2.0mm	3 3 metre
		LCA	LC APC		SL Simplex LSZH-3			5 5 metre
		SC	SC		SR Riser Simplex			10 10 metre
		SCA	SC APC		DR Riser Duplex			XX Specify
		FC	FC		FD Flat Duplex			
		FCA	FC APC					
		ST	ST					



Example Part Number

LCS	LC	7A1	D	YE	5
-----	----	-----	---	----	---

This part number was created a 5 metre LC LSZH duplex patch cord with 2mm zip cable G.657A1 with a short boot at one end.

SCAN QR FOR PRODUCT PAGE

Europe

+44 (0) 1908 441 144  
emeasales@afllhyperscale.com  
© AFL Hyperscale 2020

Americas

+1 866 814 8615  
usasales@afllhyperscale.com

Middle East & Africa

+971 4 404 9606  
mesales@afllhyperscale.com

India

+91 80 46874687  
indiasales@afllhyperscale.com

Asia Pacific

+86 755 2561 3694  
apacsales@afllhyperscale.com