

Delock PCI Express Card > 4 x Serial, 1 x Parallel

Description

This PCI Express card by Delock expands the PC by four external serial ports and one external parallel port. Different devices, such as scanner, printer, mouse etc., can be connected to the card.



Specification

- Connectors:
 - external:
 - 2 x serial RS-232 DB9 male
 - 2 x serial RS-232 DB9 male (separate rear bracket)
 - 1 x Parallel DB25 female (separate rear bracket)
 - internal:
 - 1 x PCI Express x1, V1.0a
- Chipset: Moschip MCS9922
- Data transfer rate:
 - serial up to 115.2 Kb/s
 - parallel up to 1.5 Mb/s
- FIFO: 16 byte
- SPP, EPP, ECP compatible to IEEE 1284
- Compatible with 16C550 UART serial port

System requirements

- Windows Server-2003/Vista/7/8/8.1/10/10-64, Linux Kernel 2.6
- PC with one free PCI Express slot and two rear slot

Package content

- PCI Express card
- 2 x rear bracket
- 5 x low profile bracket
- Driver CD
- User manual

Item no. 89177

EAN: 4043619891771

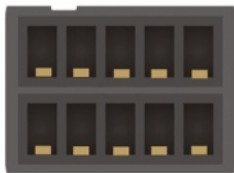
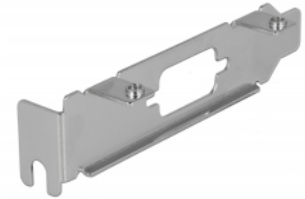
Country of origin: China

Package: Retail Box

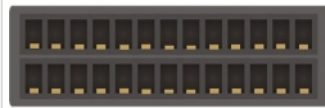
Images



3 x



COM



LPT



- | | |
|--|---|
| <ul style="list-style-type: none"> ① 2 x Serial RS-232C DB9 male ② 2 x Serial RS-232C DB9 female ③ 1 x Parallel DB25 female | <ul style="list-style-type: none"> ④ 1 x PCI Express x1 91 Pin ⑤ 2 x 9 pin COM port pin header male ⑥ 1 x 25 pin parallel port pin header male |
|--|---|