

Delock LTE Antenna SMA plug 1 - 4 dBi omnidirectional with tilt joint black

Description

This GSM / UMTS / LTE antenna can be connected to a GSM / UMTS / LTE device with SMA interface, in order to send and receive signals.



Specification

- Connector: SMA plug
- Frequency range:
 - 790 - 960 MHz
 - 1710 - 2170 MHz
 - 2570 - 2620 MHz
- Antenna gain:
 - 1.0 - 3.5 dBi @ 790 - 960 MHz
 - 2.0 - 4.0 dBi @ 1710 - 2170 MHz
 - 3.0 - 4.0 dBi @ 2570 - 2620 MHz
- Impedance: 50 Ohm
- Polarisation: linear, vertical
- VSWR: 4.0
- Operating temperature: -10 °C ~ 55 °C
- Housing material: ABS
- Colour: black
- Length:
 - ca. 163.10 mm (with tilt joint)
 - ca. 137.00 mm (without tilt joint)
- Diameter:
 - ca. 19.60 mm (top)
 - ca. 21.60 mm (max.)
 - ca. 13.50 mm (SMA)

System requirements

- Device with a free SMA jack

Package content

- LTE antenna

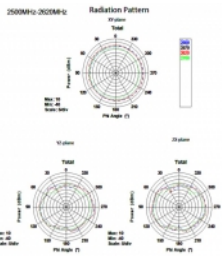
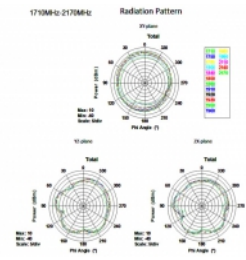
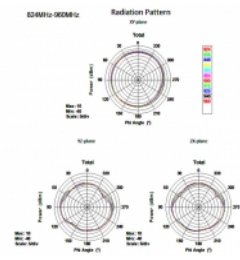
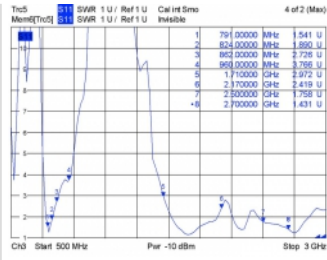
Item no. 88451

EAN: 4043619884513

Country of origin: Taiwan, Republic of China

Package: Retail Box

Images



Interface	
connector:	standard SMA plug
Technical characteristics	
Frequency range:	standard 1710 - 2170 MHz 2570 - 2620 MHz 790 - 960 MHz
Gain:	standard 1.0 - 3.5 dBi @ 790 - 960 MHz 2.0 - 4.0 dBi @ 1710 - 2170 MHz 3.0 - 4.0 dBi @ 2570 - 2620 MHz
Impedance:	standard 50 Ω
Operating temperature:	standard -10 °C ~ 55 °C
Polarisation:	standard linear vertical
VSWR:	standard 4.0
Physical characteristics	
Housing material:	standard ABS
Diameter connector:	standard 13.50 mm
Length with tilt joint:	standard 163.10 mm
Length without tilt joint:	standard 137.00 mm
Colour:	standard black