



Delock Sub-D15 male to Terminal Block Adapter with Enclosure

Description

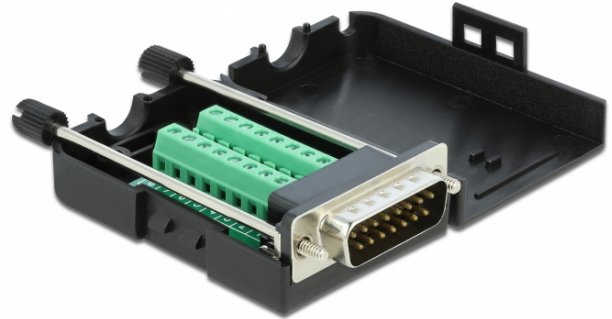
This terminal block adapter by Delock can be used to connect bare wires. Thus the adapter is not only convenient for special industry applications, but also for the hobby area, e.g. railway modelling.

Protection by enclosure

The plastic enclosure protects the PCB from dirt and damage.

Strain relief

The screw-on strain relief fixes the cable in the enclosure.



Specification

- Connectors:
 - 1 x serial Sub-D15 male (2 rows) with screws
 - 1 x 16 pin terminal block
- Pin assignment: 1:1
- Pitch: 3.81 mm
- Useable for a cable gauge from 26 to 18 AWG
- Operating temperature: -20 °C ~ 105 °C
- Dimensions (LxWxH): ca. 78 x 42 x 21 mm

System requirements

- A free Sub-D15 female

Package content

- Adapter
- 1 x strain relief
- 2 x locking screws

Item no. 66566

EAN: 4043619665662

Country of origin: CHINA

Package: Zip poly bag

Images





Interface	
Connector 1:	standard 1 x Serial Sub-D15 male with screws
Connector 2:	standard 1 x 16 pin terminal block
Technical characteristics	
Operating temperature:	standard -20 °C ~ 105 °C
Physical characteristics	
Pitch distance:	standard 3.81 mm
Conductor gauge:	standard 26 - 18 AWG
Length:	standard 78 mm
Width:	standard 42 mm
Height:	standard 21 mm