



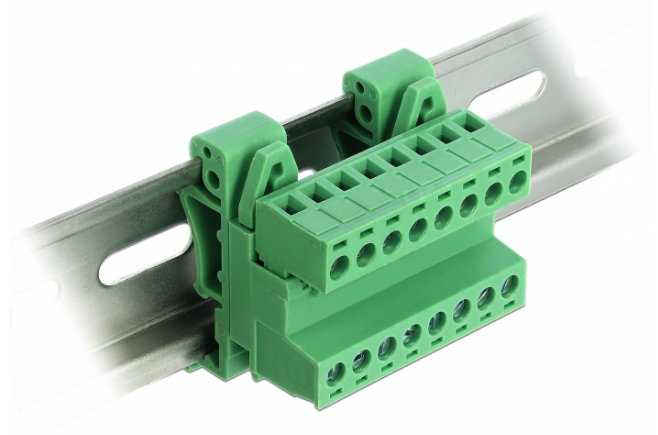
Delock Terminal Block Set for DIN Rail 8 pin with pitch 5.08 mm angled

Description

This terminal block set by Delock is suitable for the mounting on a DIN rail. Thus data or power cables can be connected via the terminal block.

DIN Rail Mounting

This terminal block set can be fixed on a DIN rail with a width of 35 mm.



Specification

- Connectors:
 - Terminal block:
 - 1 x 8 pin male
 - 1 x 8 pin screw terminal
 - Connection terminal:
 - 1 x 8 pin female
 - 1 x 8 pin screw terminal
- Pitch: 5.08 mm
- Environmental temperature: -40 °C ~ 105 °C
- Useable for a cable gauge range from 24 to 12 AWG
- Withstanding voltage: AC 2500 V / 1 min
- Rated voltage according to: UL: 300 V, IEC: 320 V
- Rated current according to: UL: 10 A, IEC: 15 A
- DIN rail mounting: 35 mm
- Material: plastic
- Colour: green
- Dimensions (LxWxH): ca. 42.50 x 32.45 x 42.45 mm

Package content

- Terminal block
- Connection terminal
- DIN rail clip

Item no. 66081

EAN: 4043619660810

Country of origin: China

Package: Poly bag

Images





General	
Suitable for conductor gauge:	standard 24 - 12 AWG
Mounting type:	standard DIN rail 35 mm
Interface	
Connector 1:	standard 1 x 8 Pin Stecker
Connector 2:	standard 1 x 8 Pin Schraubklemme
connector 3:	standard 1 x 8 Pin Buchse
connector 4:	standard 1 x 8 Pin Schraubklemme
Technical characteristics	
Storage temperature:	standard -40 °C ~ 105 °C
Physical characteristics	
Housing material:	standard Plastic
Length:	standard 42.50 mm
Width:	standard 32.45 mm
Height:	standard 42,45 mm
Colour:	standard green