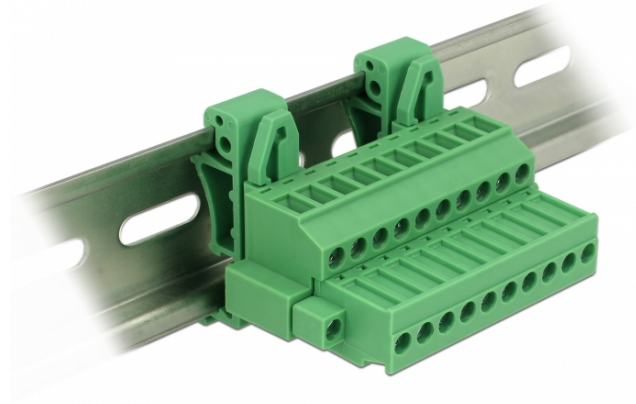


## Delock Terminal block set for DIN rail 10 pin with screw lock

### Description

This terminal block set by Delock is suitable for the mounting on a DIN rail. Thus data or power cables can be connected via the terminal block.



### Specification

- Connectors:
  - Terminal block:
    - 1 x 10 pin terminal block male
    - 1 x 10 pin terminal block
  - Connection terminal:
    - 1 x 10 pin terminal block female
    - 1 x 10 pin terminal block
- Pitch: 5.08 mm
- Environmental temperature: -40 °C ~ 105 °C
- Useable for a cable gauge range from 24 to 12 AWG
- DIN rail mounting: 35 mm
- Material: plastic
- Colour: green
- Dimensions (LxWxH): ca. 42,50 x 34,90 x 61,95 mm

### Item no. 65941

EAN: 4043619659418

Country of origin: China

Package: Poly bag

### Package content

- Terminal block
- DIN rail clip
- Connection terminal

### Images



**General**

Suitable for conductor gauge:	<b>standard</b> 24 - 12 AWG
Mounting type:	<b>standard</b> DIN rail 35 mm

**Interface**

Connector 1:	<b>standard</b> 1 x 10 pin terminal block male
Connector 2:	<b>standard</b> 1 x 10 pin terminal block
connector 3:	<b>standard</b> 1 x 10 pin terminal block female
connector 4:	<b>standard</b> 1 x 10 pin terminal block

**Technical characteristics**

Storage temperature:	<b>standard</b> -40 °C ~ 105 °C
----------------------	------------------------------------

**Physical characteristics**

Pitch distance:	<b>standard</b> 5.08 mm
Housing material:	<b>standard</b> Plastic
Length:	<b>standard</b> 42.50 mm
Width:	<b>standard</b> 34.90 mm
Height:	<b>standard</b> 61.95 mm
Colour:	<b>standard</b> green