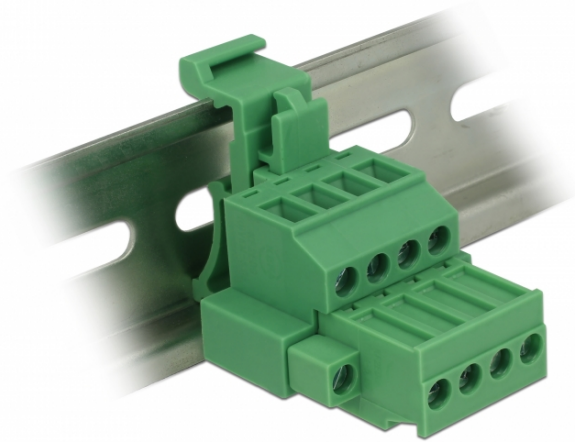


Delock Terminal block set for DIN rail 4 pin with screw lock

Description

This terminal block set by Delock is suitable for the mounting on a DIN rail. Thus data or power cables can be connected via the terminal block.



Specification

- Connectors:
 - Terminal block:
 - 1 x 4 pin terminal block male
 - 1 x 4 pin terminal block
 - Connection terminal:
 - 1 x 4 pin terminal block female
 - 1 x 4 pin terminal block
- Pitch: 5.08 mm
- Environmental temperature: -40 °C ~ 105 °C
- Useable for a cable gauge range from 24 to 12 AWG
- DIN rail mounting: 35 mm
- Material: plastic
- Colour: green
- Dimensions (LxWxH): ca. 42.50 x 34.90 x 31.40 mm

Item no. 65936

EAN: 4043619659364
 Country of origin: China
 Package: Poly bag

Package content

- Terminal block
- DIN rail clip
- Connection terminal

Images



General	
Suitable for conductor gauge:	standard 24 - 12 AWG
Mounting type:	standard DIN rail 35 mm
Interface	
Connector 1:	standard 1 x 4 pin terminal block male
Connector 2:	standard 1 x 4 pin terminal block
connector 3:	standard 1 x 4 pin terminal block female
connector 4:	standard 1 x 4 pin terminal block
Technical characteristics	
Storage temperature:	standard -40 °C ~ 105 °C
Physical characteristics	
Pitch distance:	standard 5.08 mm
Housing material:	standard Plastic
Length:	standard 42.50 mm
Width:	standard 34.90 mm
Height:	standard 21.40 mm
Colour:	standard green