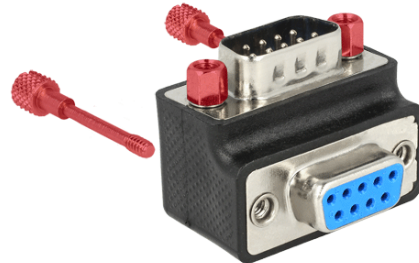


Delock Adapter Sub-D 9 pin male > female 90° angled Nut and Screw changeable

Description

This adapter by Delock allows to change the angle of a serial connection by 90°. Thus, a serial cable can be easily connected without any problem in case the existing serial female port is difficult to access. Furthermore it is possible to change the screws and nuts against each other.



Specification

- Connectors:
 - 1 x Sub-D 9 pin male >
 - 1 x Sub-D 9 pin female
- Female port 90° angled
- Colour: black
- Dimensions (LxWxH): ca. 33 x 25.4 x 25.4 mm

System requirements

- One free Sub-D 9 pin female

Package content

- Adapter Sub-D 9 pin

Item no. 65593

EAN: 4043619655939

Country of origin: China

Package: Poly bag

Images

