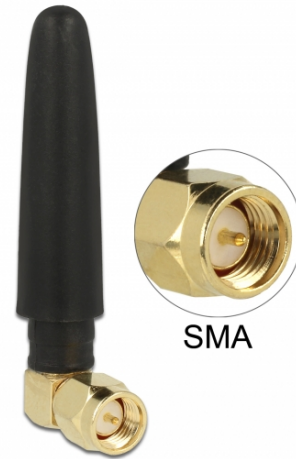


Delock WLAN 802.11 b/g/n Antenna SMA plug 90° 2 dBi omnidirectional with tilt joint and flexible material black

Description

This antenna by Delock allows the usage of the 2.4 GHz band indoors. It is completely compatible to Bluetooth, WLAN 2.4 GHz, ZigBee 2.4 GHz, ISM 2.4 GHz.



Specification

- Connector: 1 x SMA plug 90°
- Bluetooth, WLAN 2.4 GHz, ZigBee 2.4 GHz, ISM
- Frequency range: 2.4 - 2.5 GHz
- Antenna gain: 2 dBi
- Impedance: 50 Ohm
- VSWR: 2.5
- Polarisation: linear, vertical
- Operating temperature: -40 °C ~ 85 °C
- Housing material: rubber
- Colour: black
- Antenna length: ca. 5 cm

System requirements

- Device with a free SMA jack

Package content

- Antenna

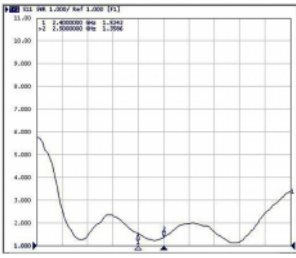
Item no. 12624

EAN: 4043619126248

Country of origin: China

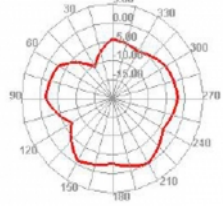
Package: Poly bag

Images

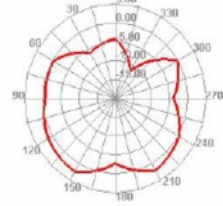


Freq (MHz)	Effi (%)	Effi (dB)	Gain (dBi)	Gain (dBd)
2400	70,99	-1,49	4,17	2,02
2410	69,47	-1,58	3,91	1,76
2420	69,27	-1,59	3,83	1,68
2430	69,19	-1,60	3,67	1,52
2440	68,08	-1,67	3,54	1,39
2450	69,57	-1,58	3,58	1,43
2460	70,66	-1,51	3,56	1,41
2470	71,76	-1,44	3,57	1,42
2480	72,30	-1,41	3,50	1,35
2490	73,39	-1,34	3,56	1,41
2500	73,47	-1,34	3,60	1,45

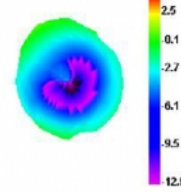
2400.000MHz E1



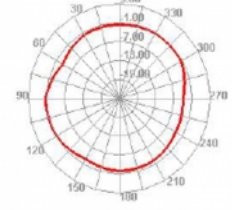
2400.000MHz E2



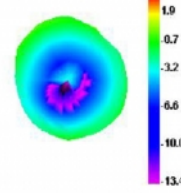
2400.000MHz



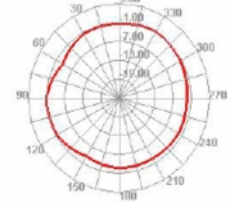
2400.000MHz H



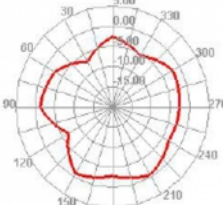
2450.000MHz



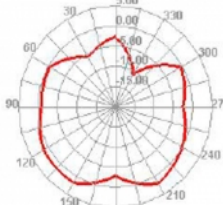
2450.000MHz H



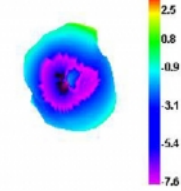
2450.000MHz E1



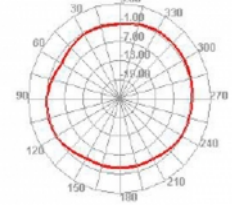
2450.000MHz E2



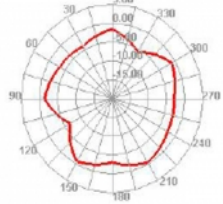
2500.000MHz



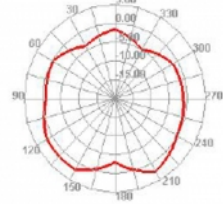
2500.000MHz H



2500.000MHz E1



2500.000MHz E2



General	
Suitable for indoor:	standard yes
Technical characteristics	
Frequency range:	standard 2.4 - 2.5 GHz
Antenna gain:	standard 2 dBi
Impedance:	standard 50 Ω
Operating temperature:	standard -40 °C ~ 85 °C
Polarisation:	standard vertical
VSWR:	standard 2.5
Physical characteristics	
Antenna type:	standard dipol antenna omnidirectional
Housing colour:	standard black
Housing material:	standard rubber
Length:	standard 50 mm