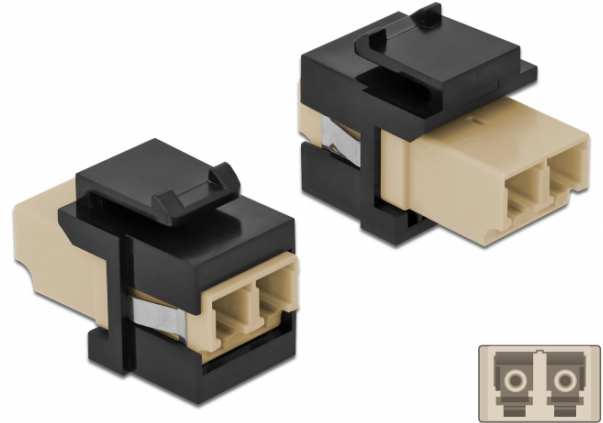


# Delock Keystone Module LC Duplex female to LC Duplex female beige / black

## Description

This module by Delock can be used to extend fiber optic cables. With its standardised dimensions it can be used for easy snap-in mounting in e.g. a Keystone patch panel, face plate or surface-mount box.



## Specification

- Connectors:
  - 1 x LC Duplex female >
  - 1 x LC Duplex female
- Colour: beige
- For multi-mode fiber
- Insertion loss • Dust covers
- For Keystone ports with 19.2 x 14.9 mm
- Housing colour: black
- Dimensions (LxWxH): ca. 29.2 x 16.5 x 21.9 mm

## System requirements

- A free LC Duplex plug

## Package content

- Keystone module

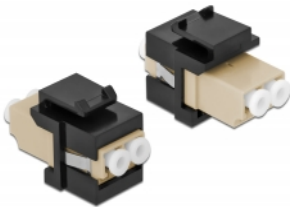
## Item no. 86719

EAN: 4043619867196

Country of origin: China

Package: Zip poly bag

## Images



General	
Mounting type:	<b>standard</b> Keystone module
Interface	
Connector 1:	<b>standard</b> 1 x LC Duplex
Connector 2:	<b>standard</b> 1 x LC Duplex
Physical characteristics	
Housing colour:	<b>standard</b> black
Length:	<b>standard</b> 29.2 mm
Width:	<b>standard</b> 16.5 mm
Height:	<b>standard</b> 21.9 mm
Colour:	<b>standard</b> beige