

Delock Easy 45 Module USB 2.0 Type-A female to Terminal Block 22.5 x 45 mm

Description

This Easy 45 module by Delock is designed to provide a USB 2.0 Type-A female port. The simple snap-in mechanism ensures that the module is firmly in place and can be easily removed if necessary.

Easy 45 connects

Easy 45 is a variable, modular system that allows components such as sockets, HDMI or USB connections to be added according to your needs. The Easy 45 modules are standardised and can be mounted in various module holder or cable ducts. Easy 45 builds the interface between electrical, network and system installation and many peripheral devices such as TV, monitors, printers, laptops and much more.



Item no. 81343

EAN: 4043619813438

Country of origin: China

Package: White Box

Specification

- Connectors:
external: 1 x USB 2.0 Type-A female
internal: 1 x 6 pin terminal block screw terminal
- Material: ABS plastic
- Suitable for module holder Delock Easy 45
- Suitable for 45 mm cable duct with minimum depth 45 mm
- Module size: 22.5 x 45 mm
- Dimensions (LxWxH): ca. 22.5 x 45.0 x 33.0 mm
- Colour: white

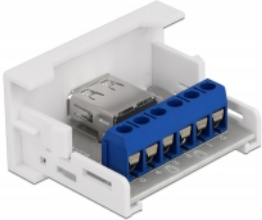
System requirements

- A free module port Delock Easy 45

Package content

- Easy 45 module

Images



General

| | |
|----------------|---------|
| Mounting type: | Easy 45 |
|----------------|---------|

Interface

| | |
|--------------|---------------------------------------|
| Connector 1: | 1 x 6 Pin Terminalblock Schraubklemme |
| Connector 2: | 1 x USB 2.0 Type-A female |

Physical characteristics

| | |
|---------|---------------|
| Length: | 45 mm |
| Width: | 22.5 mm |
| Height: | 39 mm |
| Colour: | RAL 9003 Weiß |