

# Delock Terminal block set for DIN rail 6 pin with screw lock

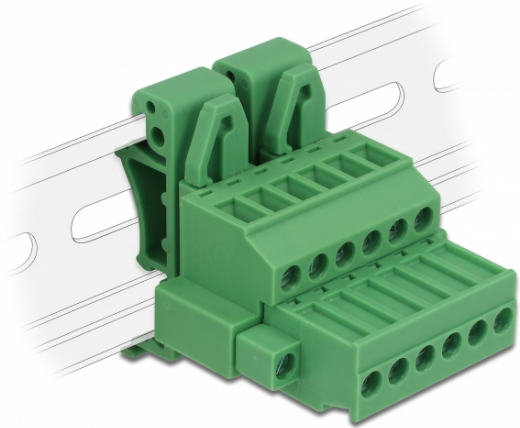
## Description

This terminal block set by Delock is suitable for the mounting on a DIN rail. Thus data or power cables can be connected via the terminal block.

### DIN Rail Mounting

This terminal block set can be fixed on a DIN rail with a width of 35 mm.

[Terminal Block Set for DIN rail \(Video\)](#)



## Specification

- Connectors:
  - Terminal block:
    - 1 x 6 pin terminal block male
    - 1 x 6 pin terminal block
  - Connection terminal:
    - 1 x 6 pin terminal block female
    - 1 x 6 pin terminal block
- Pitch: 5.08 mm
- Environmental temperature: -40 °C ~ 105 °C
- Useable for a cable gauge range from 24 to 12 AWG
- DIN rail mounting: 35 mm
- Material: plastic
- Colour: green
- Dimensions (LxWxH): ca. 42.50 x 34.90 x 41,50 mm

## Item no. 65942

EAN: 4043619659425

Country of origin: China

Package: Zip poly bag

## Package content

- Terminal block
- DIN rail clip
- Connection terminal

## Images



| General                       |                                 |
|-------------------------------|---------------------------------|
| Suitable for conductor gauge: | 24 - 12 AWG                     |
| Mounting type:                | DIN rail 35 mm                  |
| Interface                     |                                 |
| Connector 1:                  | 1 x 6 pin terminal block male   |
| Connector 2:                  | 1 x 6 pin terminal block        |
| connector 3:                  | 1 x 6 pin terminal block female |
| connector 4:                  | 1 x 6 pin terminal block        |
| Technical characteristics     |                                 |
| Storage temperature:          | -40 °C ~ 105 °C                 |
| Physical characteristics      |                                 |
| Pitch distance:               | 5.08 mm                         |
| Housing material:             | Plastic                         |
| Length:                       | 42.50 mm                        |
| Width:                        | 34.90 mm                        |
| Height:                       | 41.50 mm                        |
| Colour:                       | green                           |