



## Delock 10" Network Cabinet with glass door 4U black

### Description

This network cabinet by Delock can be used for stand or wall mounting and is ideal for the installation of 10" devices e.g. patch panels.

#### Easy access to the devices

The removable side panels allow an easy and quick access to the installed devices in the rear part of the network cabinet.

#### Front door lockable with viewing window

The network cabinet can be locked to ensure greater security. The viewing window allows a view of the inside of the network cabinet at all times.

#### Optimal ventilation system

The integrated ventilation slots on the upper cover plate ensure optimal ventilation of the installed devices.



### Specification

- 10" network cabinet for stand or wall mounting, 4U
- 2 profile rails on the front
- Door hinge can be selected variably (left or right)
- Cable bushing possible in floor and at the top, including cover caps
- Front door with safety glass, lockable
- Removable side panels
- Ventilation slots for ventilation
- Mounting depth: max. 240 mm
- Load capacity: max. 40 kg
- Colour: black
- Material: metal
- Dimensions (LxWxH): ca. 350 x 280 x 255 mm

### Package content

- Network cabinet
- 2 x keys
- 20 x screw M6
- 20 x washer
- 20 x caged nut

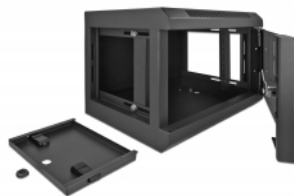
### Item no. 43379

EAN: 4043619433797

Country of origin: China

Package: Box

### Images





General	
Mounting type:	<b>standard</b>
	10 in
	Wall mounting
Physical characteristics	
Material:	<b>standard</b>
	metal
Length:	<b>standard</b>
	350 mm
Width:	<b>standard</b>
	280 mm
Height:	<b>standard</b>
	250 mm
Colour:	<b>standard</b>
	black