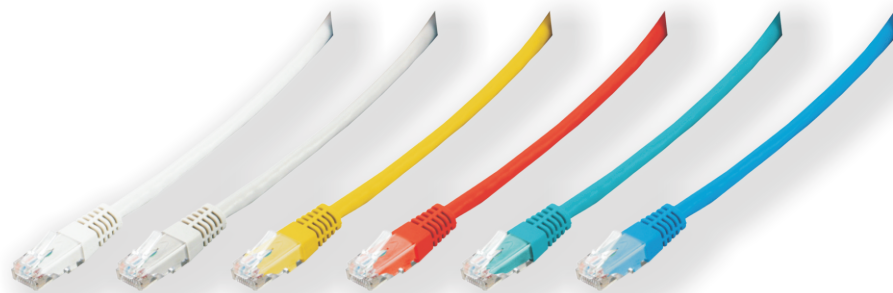


Product Information

BKT U/UTP Patch Cord Cat. 6, LSZH, Molded RJ45 Connector

PI_11450010-4.X_01.15

Crossover/patch cable used for connections in distribution cabinets or for connecting devices to subscriber's outlets. The patch cord is terminated in molded unshielded RJ45 connectors at both ends.



Features

- Connector Type: unshielded RJ45
- Cable Form Type: ANSI/TIA-568B
- Cable Type: U/UTP Cat 6 AWG 24 LSZH
- Sheath Material: PVC
- Color: according to the table below

Standards

- PN-EN 50173
- ISO/IEC 11801
- ANSI/TIA-568-C.2
- IEC 60332-1
- IEC 60754-2
- IEC 61034
- RoHS 2 2011/65/EU

Versions

Index	Colors
11450010.X	grey
11450011.X	green
11450012.X	blue
11450013.X	yellow
11450014.X	red

11450014.X → X patch cord length (m)