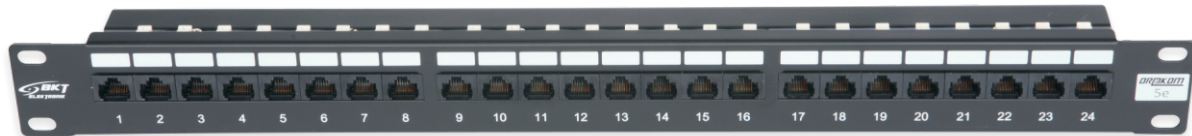


Product information

Patch Panel 19" BKT 24 x RJ45

PI_11301011.2_01.15

Patch Panel serve as terminals for wire cables laid vertically or horizontally and function as a connecting point for active equipment working within a network. All elements feature high quality transmission and mechanical parameters.



Features

- Cross Panel designed in 19" standard with a height of 1U.
- Integrated cabling shelf for securing cables using cable ties.
- 24 Unshielded RJ45 ports.
- Slot connection IDC LSA for cables with AWG 22 - AWG 26
- Color - coded terminals according to T568A and T568B schemes.
- Black color RAL 9005.

Standards

- PN-EN 50173-1
- EN 50173-1
- ISO/IEC 11801
- ANSI/TIA-568-C.2
- IEC 60603-7-2
- EN 60603-7-2
- RoHS 2 2011/65/EU

Index: 11301011.2

ROHS
COMPLIANT

