

MFPS 2HU Shelf

Content

- 1 General**
 - 1.1 General product information
 - 1.2 Cable types
- 2 Tools required**
- 3 Install front cover and latch**
- 4 Install "BACK" Mounting brackets (19" or ETSI)**
- 5 Install "FRONT" Mounting brackets (19" or ETSI)**
- 6 Install Trumpet bracket BACK mounting**
- 7 Install Trumpet bracket FRONT mounting**
- 8 Install protection cable/patch cords**
- 9 Build-up cable bracket**
- 10 Prepare cable with loose tube**

1 General

1.1 General Product Information

MFPS is a family of pivoting front patching panels addressing the specific needs of fiber access networks (POP houses and cabinets). The MFPS series offers best-in-class density. Due to its modular, layered design, MFPS shelves can be configured to match the fiber count of most OSP cables used in the access networks (96, 144, 192, 216 or 288 fibers) while preserving excellent fiber organization and management. The MFPS series is offered in patch-only, splice/patch and pre-cabled versions, and accommodates passive optical components such as splitters and WDMs.

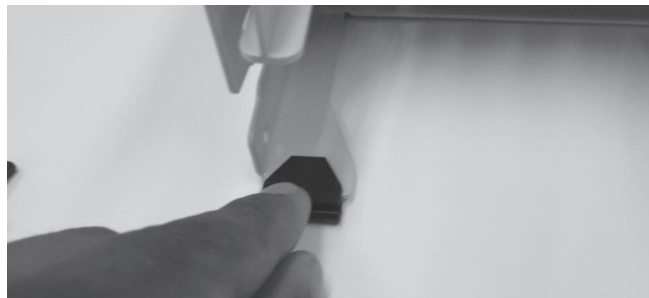
1.2 Cable types

MFPS Cable kit: For cable diameters up to 15mm
For 2x cable diameters up to 8.5mm (loose tube cables – microsheath cables)
For 1x cable diameters from 8.5mm to 15mm (loose tube cables – microsheath cables)
Cable should be flexible and allow bend radius of 75mm. Cable attachment fits corrugated tube.
16mm outer diameter (FLEX TUBE ID12XOD16 SL PA6 - TCPN 769968-000)

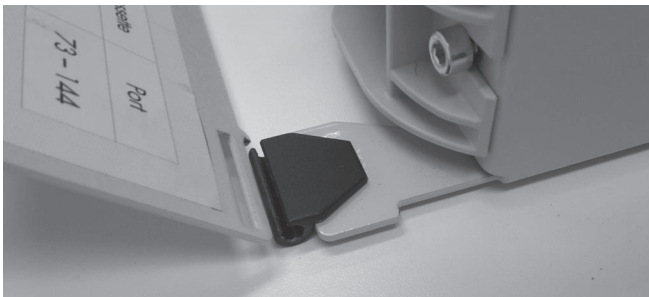
2 Tools required

Standard installation tooling for cables
Standard installation tooling for shelves
Allen wrench provided

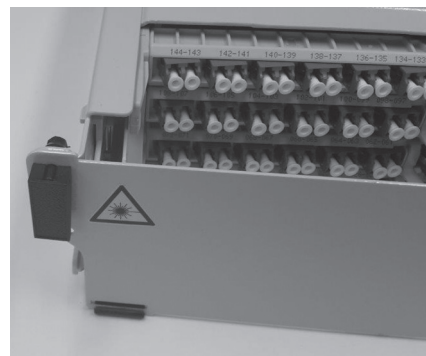
3 Install front cover and latch



3.1 Install the hinges on both sides of the shelf by first inserting the narrow end of the hinge into the hinge slot and then snapping into place.



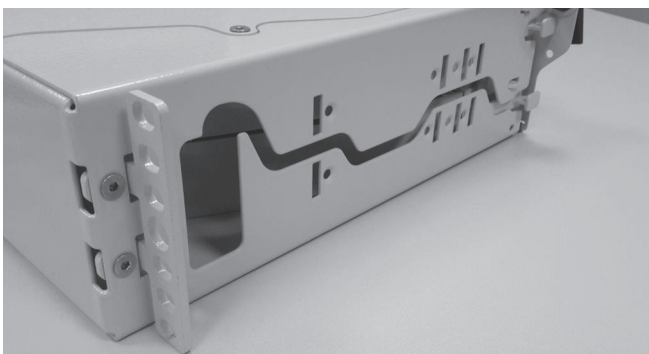
3.2 Take the front cover and place it into the slot of the hinge and push until the cover is fixed. Repeat on the other side as well.



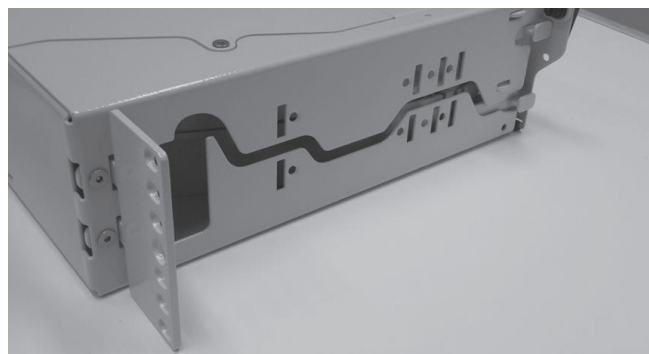
3.3 Install the latch, bushing and nut as shown in the picture. For locking the cover you push the latch down.

4 Install "BACK" Mounting brackets (19" or ETSI)

19"



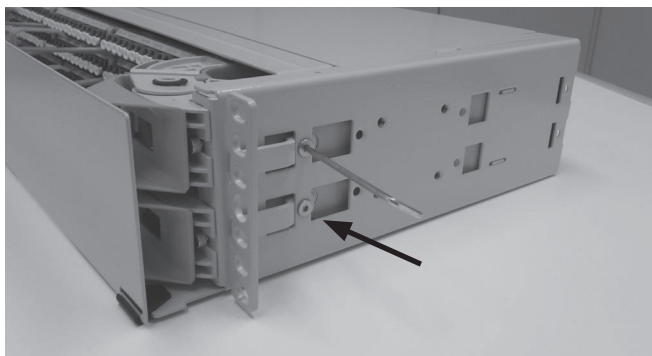
ETSI



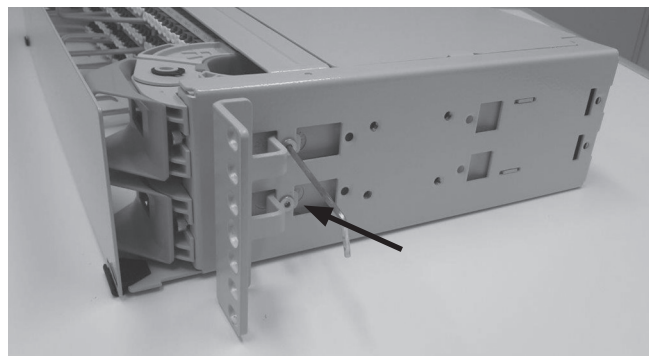
4.1 Install brackets (19" or ETSI) with the two screws (4x BOLT-CNTS-HEX ISO10642 M4X6 SS) as shown in the picture and repeat for the other side as well.

5 Install "FRONT" Mounting brackets (19" or ETSI)

19"

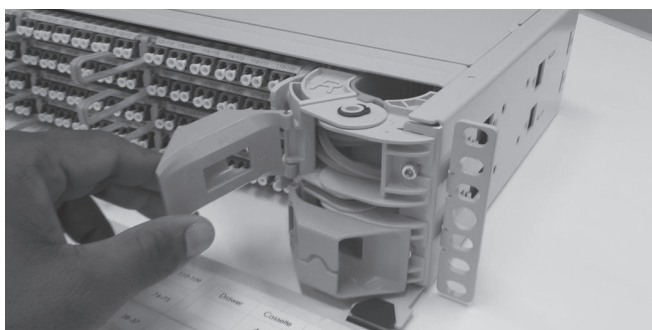


ETSI

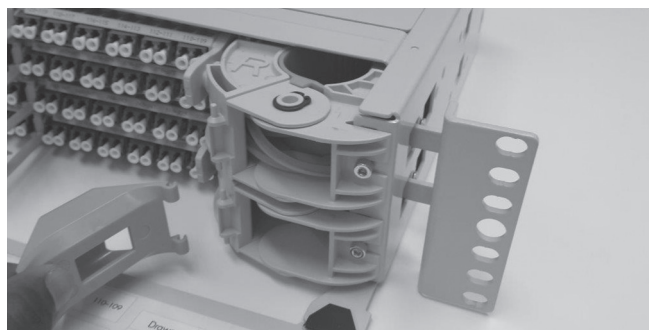
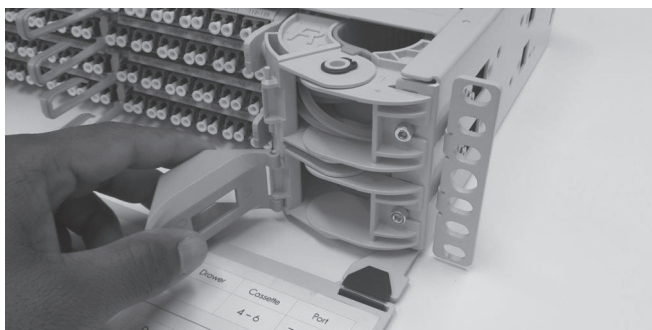
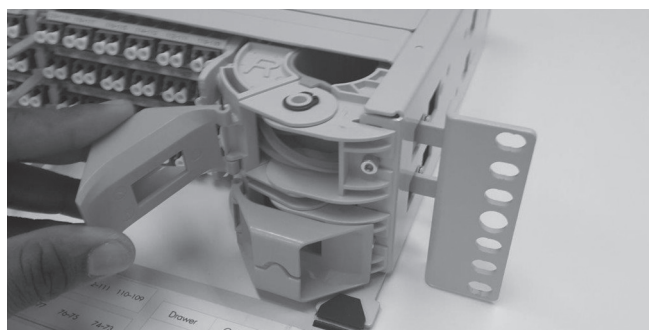


- 5.1 Install brackets (19" or ETSI) with the two screws (4x BOLT-CNTS-HEX ISO10642 M4X6 SS) as shown in the picture and repeat for the other side as well.

19"

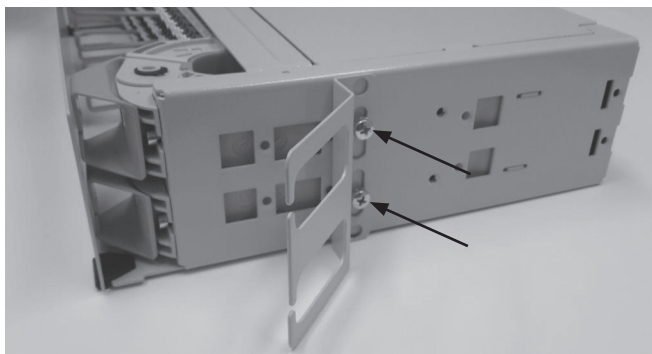


ETSI

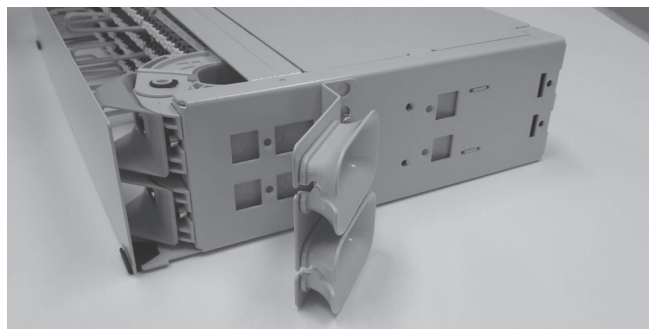
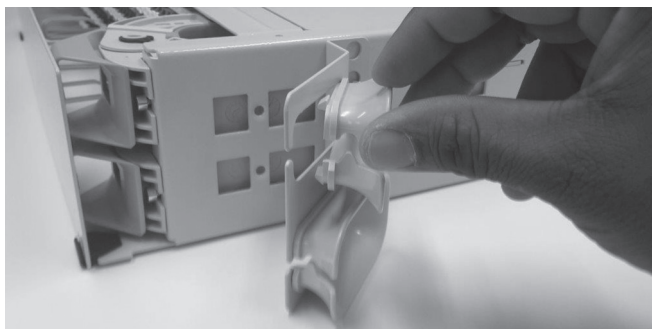


- 5.2 If you use front mounting, you have to remove the two drawer bend controls. Take the bend control, open it and pull a little bit to the front so it will release from the holder.

6 Install trumpet bracket BACK mounting

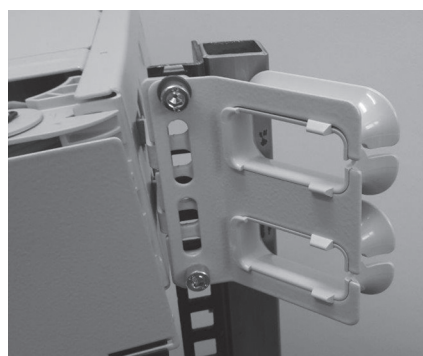


6.1 Install trumpet bracket with the two screws (BOLT-CHSE-H+W ISO7045 M5X10 STZN) as shown in the picture.



6.2 Install the two trumpets on the bracket. First slide the trumpet into the opening, then snap in place.

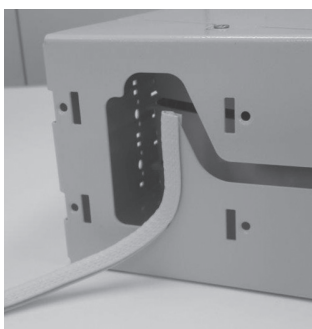
7 Install Trumpet bracket FRONT mounting



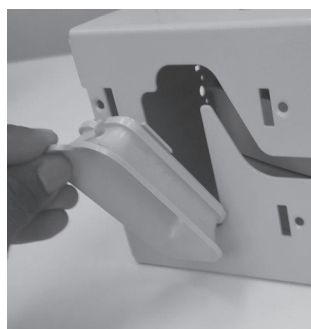
7.1 Install the shelf and trumpet bracket with two screws and cage nuts using the Allen key as shown in the picture. Then install the two trumpets. First slide the trumpet into the opening, then snap in place.

8 Install protection cable / patch cords

CABLE

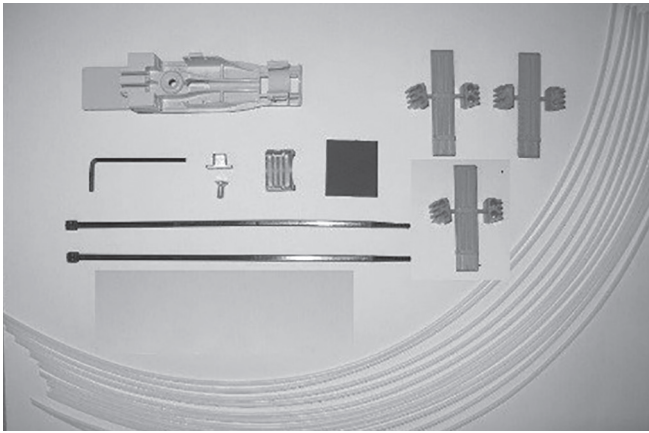


PATCH CORDS

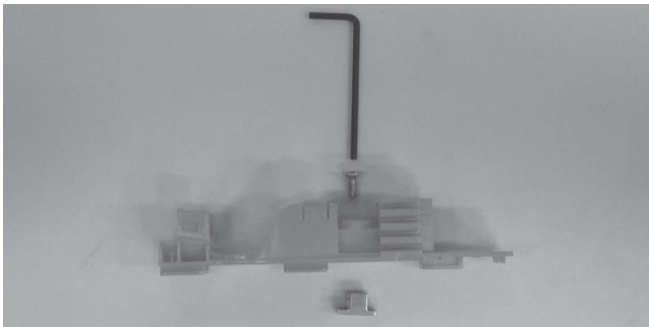


8.1 Install the applicable protectors on the shelf where the cable or the patch cords are entering the shelf.

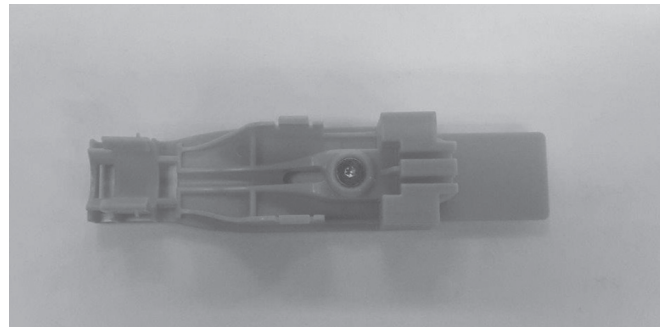
9 Build-up cable bracket



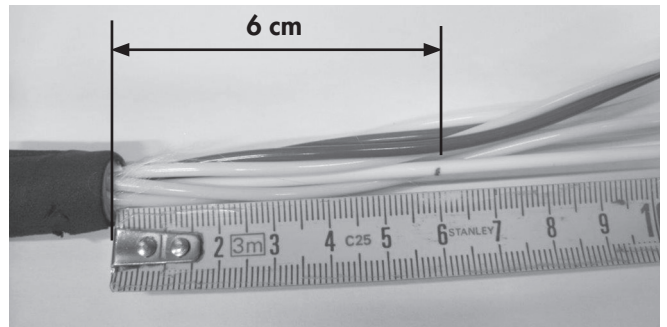
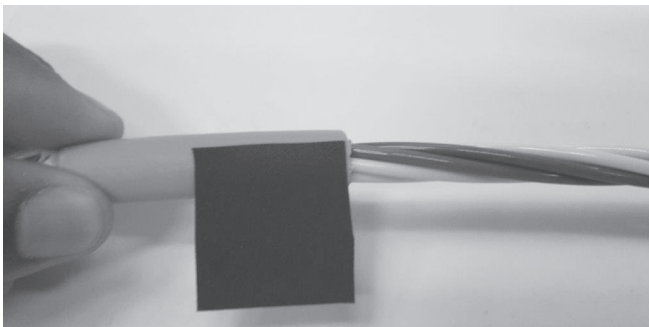
9.1 Different components to build bracket.



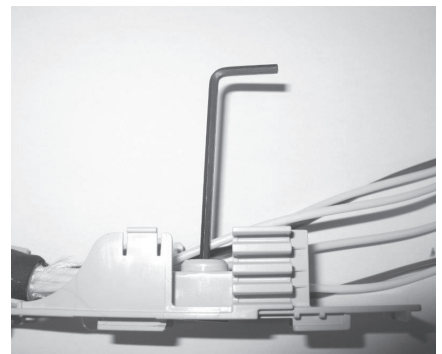
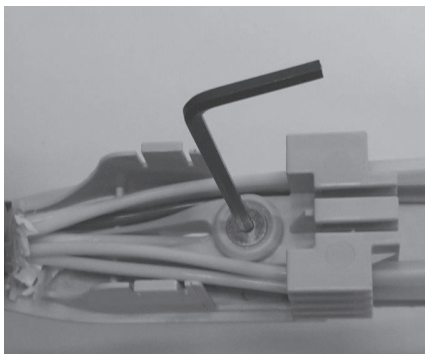
9.2 Install screw and strength member fixation.



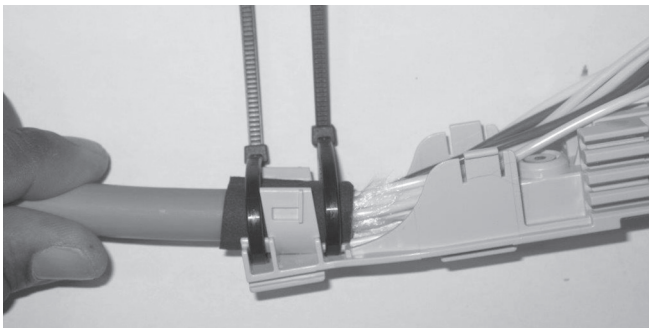
10 Prepare cable with loose tube / install MFPS shelve



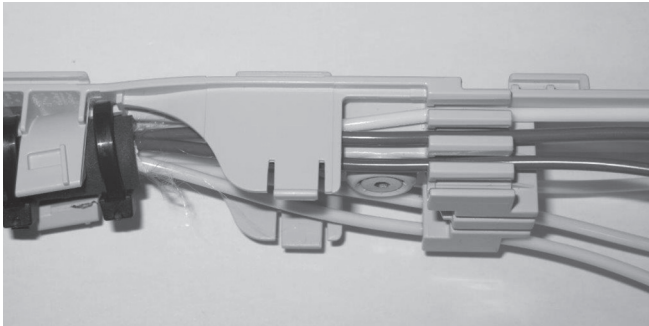
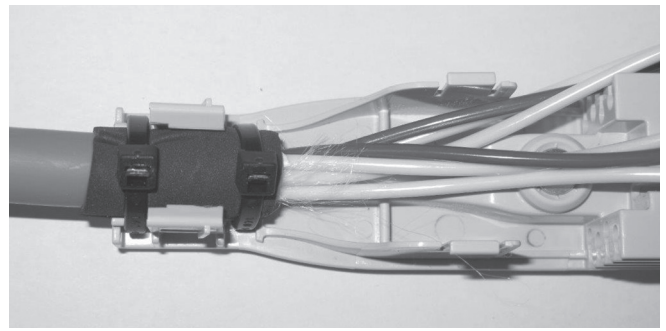
10.1 Strip cable over a length of 2 meters and apply a foam around the end of the cable. Cut the strength member to a length of 6 cm.



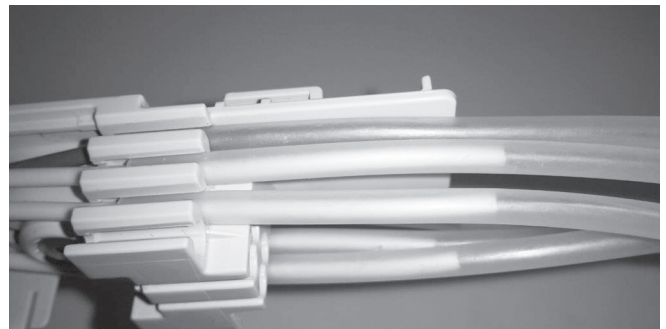
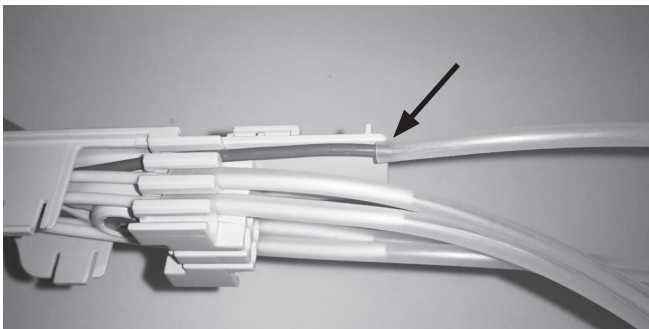
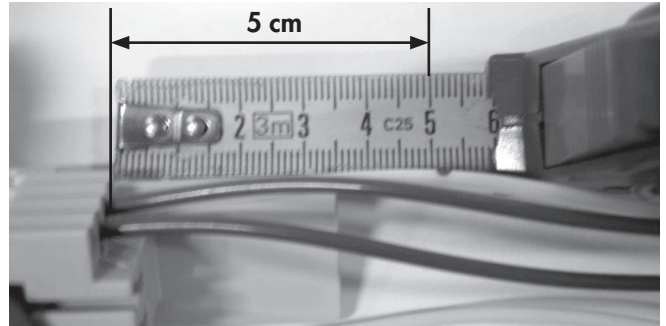
10.2 Insert and tighten the strength member on the FANOUT.



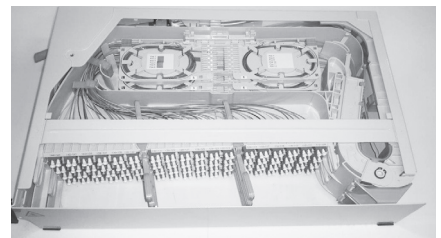
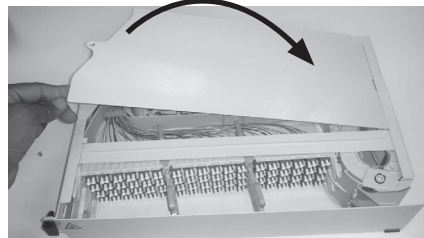
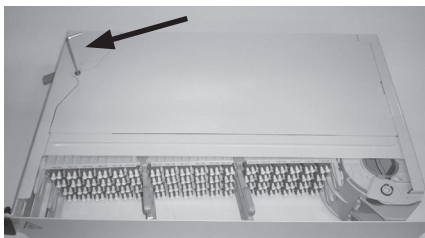
10.3 Fix cable with 2 cable ties and cut them.



10.4 Install loose tube into the FANOUT after you cut the loose tube to a length of 5 cm.



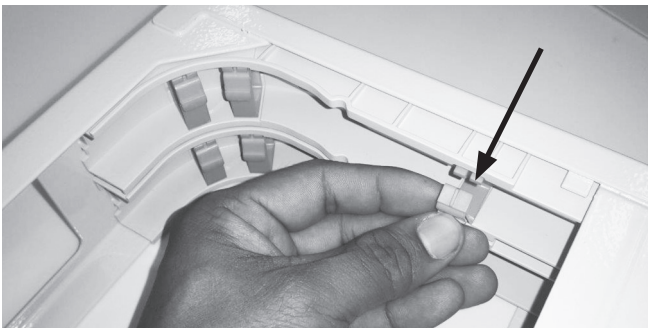
10.5 Install transparent transportation tube over the loose tube and slide into the FANOUT. Do this for all loose tubes.



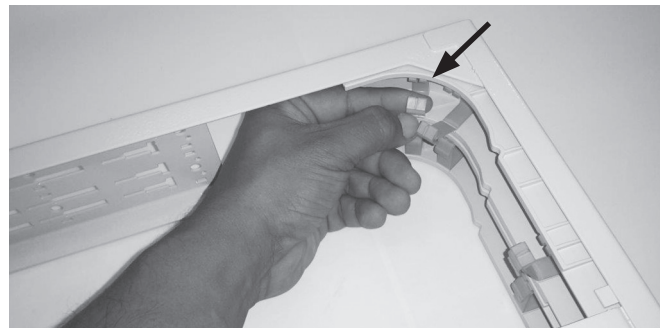
10.6 Remove top cover.



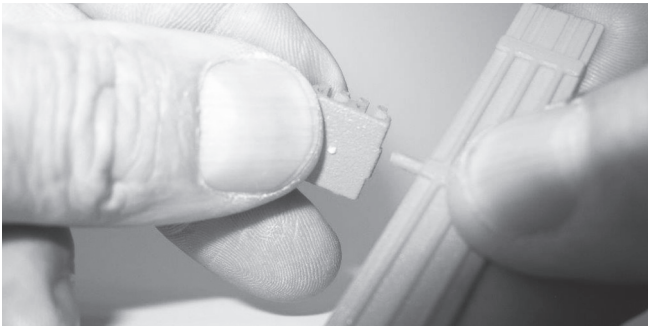
10.7 Open all drawers and install FANOUT into the shelf by sliding until you hear it locks into place.



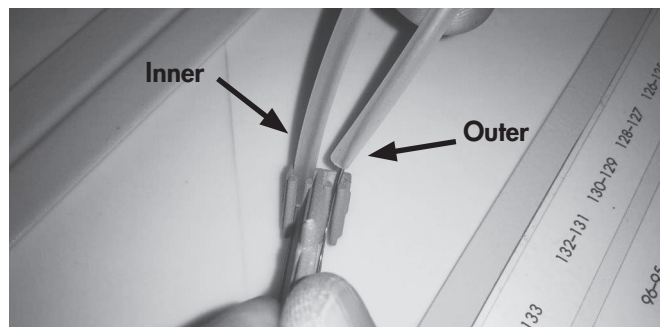
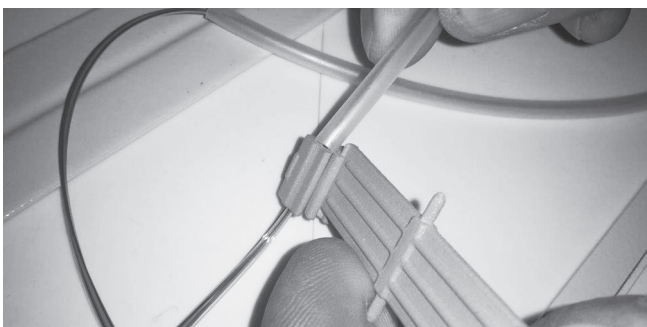
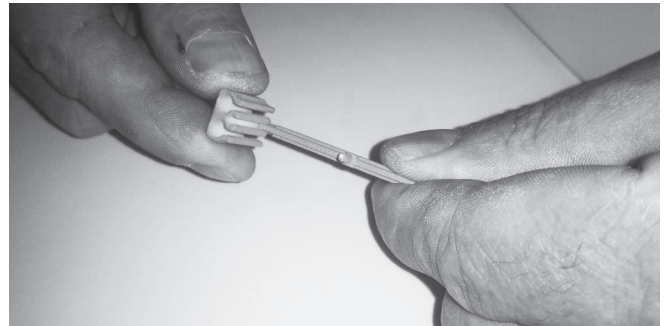
10.8 Open all the cable clips in the drawer fiber channel.



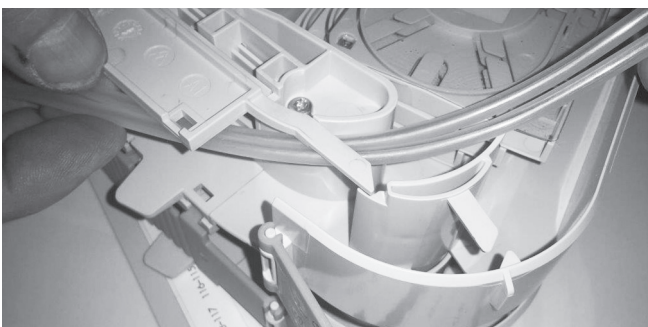
10.9 Open also the drawer inner bend control and cable clip in drawer.



10.10 Break off both tube holders and slide tool over one tube holder.



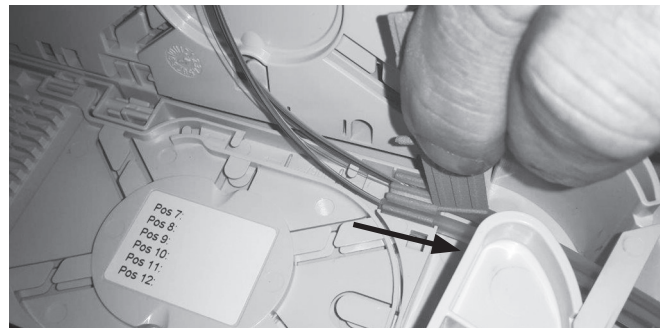
10.11 Install first 2 transparent transportation tubes on the tube holders. Tube for the outer tray on the "RIGHT side" and tube for the inner tray on the "LEFT side".



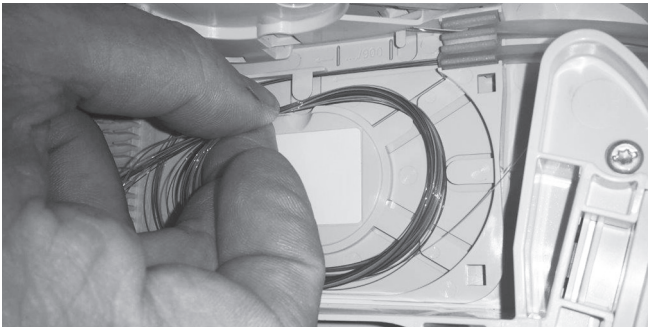
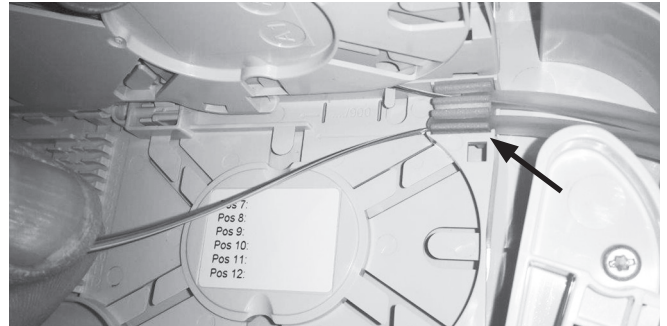
10.12 Guide transparent transportation tube through the drawer.



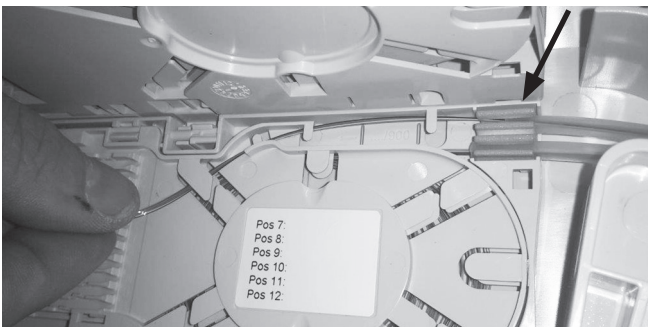
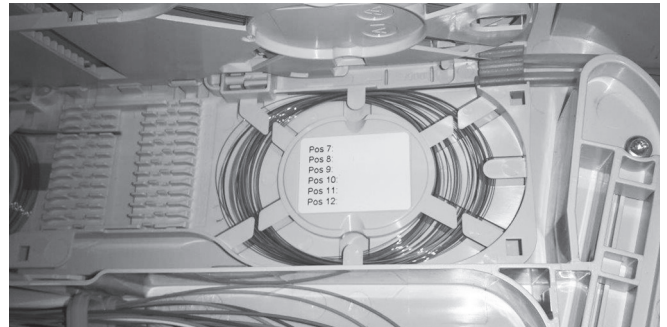
10.13 Install tube holders until you hear it locks into place and slide tool off the holder.



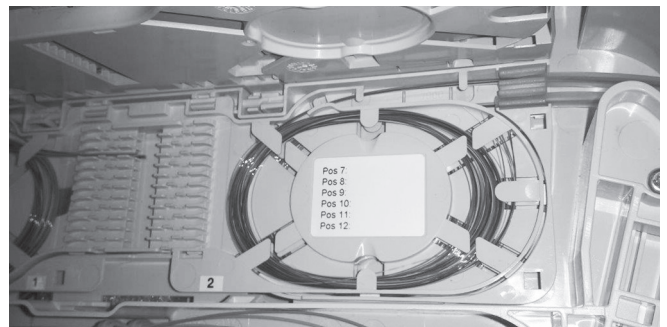
10.14 Lift inner tray and take fibers from the bottom tube of the tube holders.



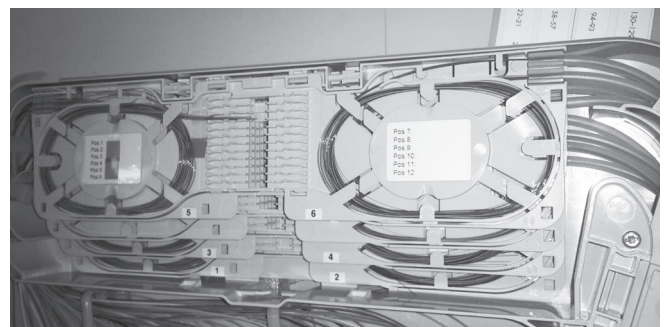
10.15 Route the fibers neatly into the channel of the outer splice tray.

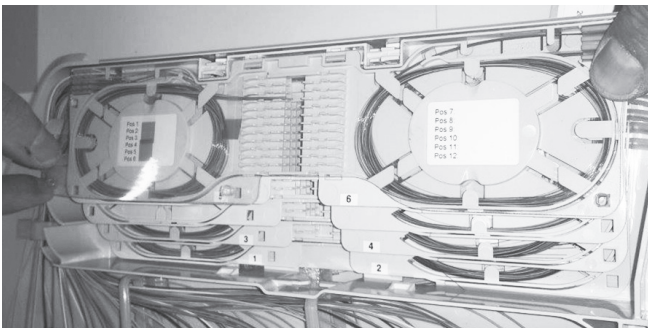


10.16 Close Inner tray, take fiber and route them neatly into the channel of the inner splice tray.

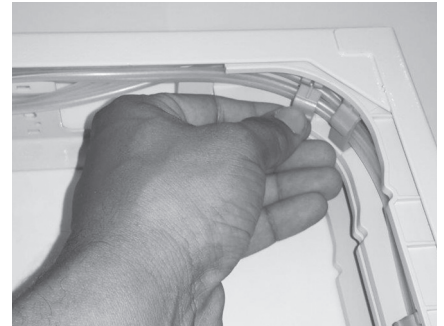
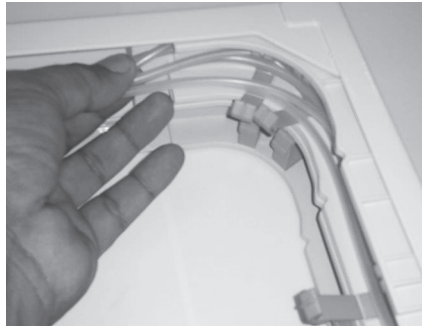
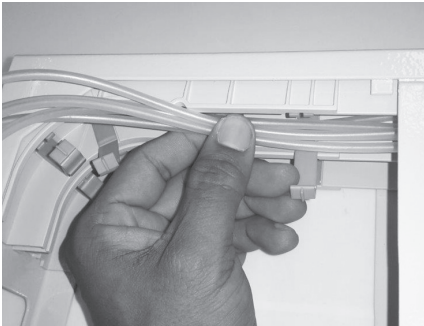


10.17 Repeat this action for all the tray's in the drawer.

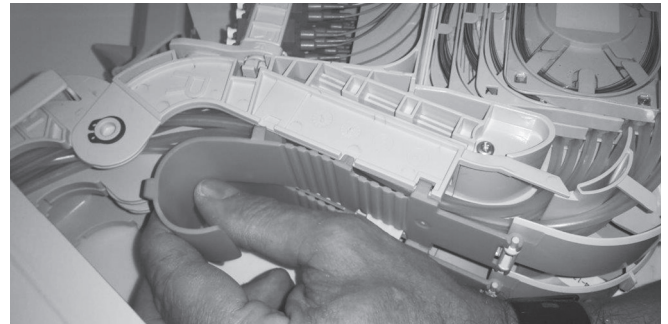
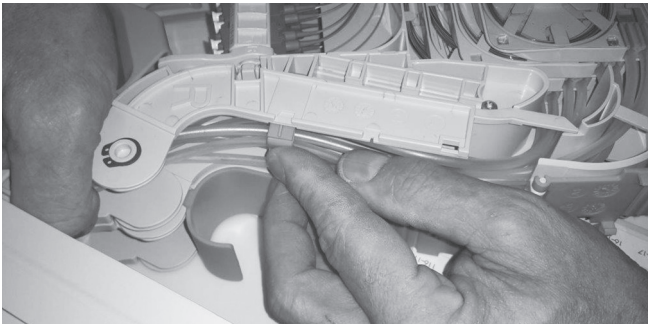




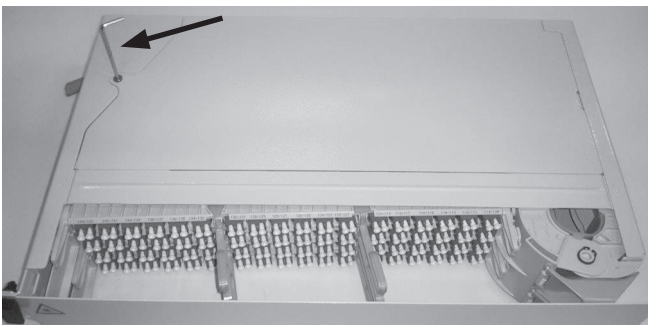
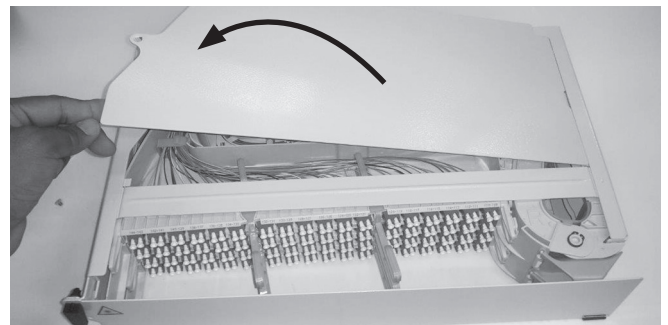
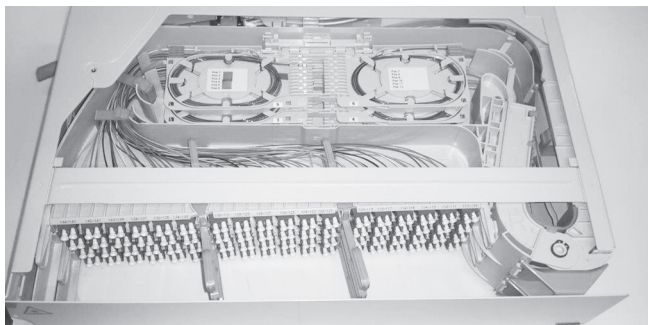
10.18 Place plastic cover on the top tray.



10.19 Guide all the tubes neatly in the drawer fiber channel and close the cable clips.



10.20 Guide the tubes neatly into the drawer and close the fiber channel clips and the inner bend control.



10.21 Install top cover again.

To find out more about CommScope® products, visit us on the web at www.commscope.com

For technical assistance, customer service, or to report any missing/damaged parts, visit us at:
<http://www.commscope.com/SupportCenter>

© 2017 CommScope, Inc. All rights reserved.

All trademarks identified by ® or ™ are registered trademarks or trademarks, respectively, of CommScope, Inc.

This document is for planning purposes only and is not intended to modify or supplement any specifications or warranties relating to CommScope products or services.

This product is covered by one or more U.S. patents or their foreign equivalents. For patents, see:
www.commscope.com/ProductPatent/ProductPatent.aspx.