

■ Features :

- Universal AC input / Full range
- Built-in active PFC function
- Withstand 300VAC surge input for 5 seconds
- Protections: Short circuit / Overload / Over voltage
- Protections: Over temperature (optional)
- Cooling by free air convection
- 1U low profile 38mm
- Built-in remote ON-OFF control
- No load power consumption<0.5W
- All using 105°C long life electrolytic capacitors
- 5 years warranty

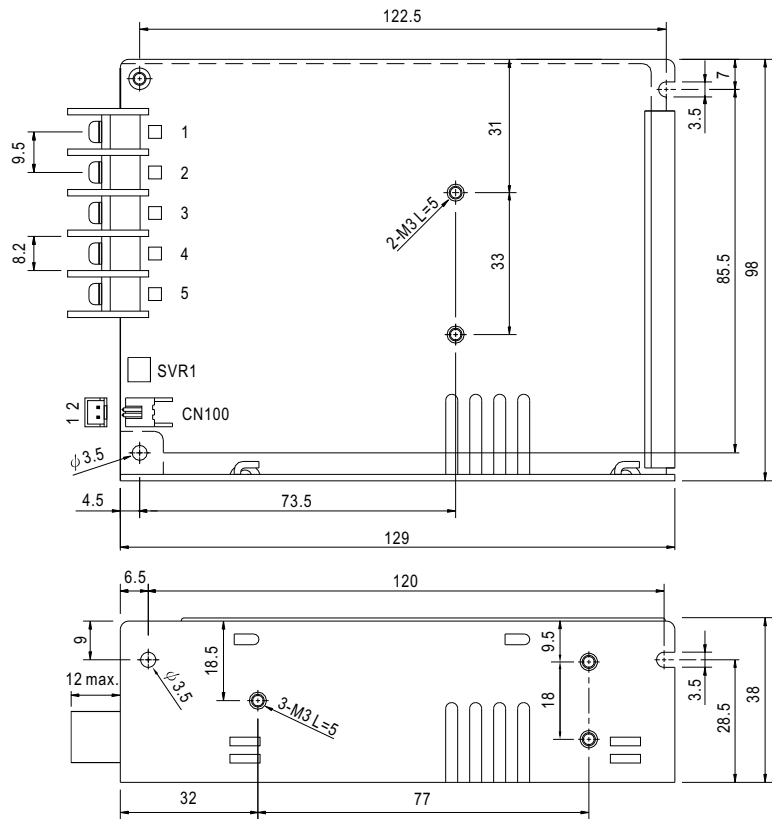


SPECIFICATION

| MODEL | HRPG-75-3.3 | HRPG-75-5 | HRPG-75-7.5 | HRPG-75-12 | HRPG-75-15 | HRPG-75-24 | HRPG-75-36 | HRPG-75-48 | |
|-----------------------|---|---|-------------|----------------|--------------|----------------|--------------|--------------|--------------|
| OUTPUT | DC VOLTAGE | 3.3V | 5V | 7.5V | 12V | 15V | 24V | 36V | 48V |
| | RATED CURRENT | 15A | 15A | 10A | 6.3A | 5A | 3.2A | 2.1A | 1.6A |
| | CURRENT RANGE | 0 ~ 15A | 0 ~ 15A | 0 ~ 10A | 0 ~ 6.3A | 0 ~ 5A | 0 ~ 3.2A | 0 ~ 2.1A | 0 ~ 1.6A |
| | RATED POWER | 49.5W | 75W | 75W | 75.6W | 75W | 76.8W | 75.6W | 76.8W |
| | RIPPLE & NOISE (max.) Note.2 | 80mVp-p | 80mVp-p | 100mVp-p | 120mVp-p | 150mVp-p | 150mVp-p | 200mVp-p | 240mVp-p |
| | VOLTAGE ADJ. RANGE | 2.8 ~ 3.8V | 4.5 ~ 5.8V | 6.8 ~ 9V | 11.4 ~ 13.8V | 14.5 ~ 18V | 21.6 ~ 28.8V | 28.8 ~ 39.6V | 40.8 ~ 55.2V |
| | VOLTAGE TOLERANCE Note.3 | ±2.5% | ±2.5% | ±2.5% | ±1.5% | ±1.5% | ±1.5% | ±1.5% | ±1.5% |
| | LINE REGULATION | ±1.0% | ±1.0% | ±1.0% | ±0.3% | ±0.3% | ±0.2% | ±0.2% | ±0.2% |
| | LOAD REGULATION | ±2.0% | ±1.5% | ±1.5% | ±0.5% | ±0.5% | ±0.5% | ±0.5% | ±0.5% |
| | SETUP, RISE TIME | 1800ms, 25ms/230VAC 1800ms, 25ms/115VAC at full load | | | | | | | |
| HOLD UP TIME (Typ.) | 50ms/230VAC 20ms/115VAC at full load | | | | | | | | |
| INPUT | VOLTAGE RANGE Note.5 | 85 ~ 264VAC 120 ~ 370VDC | | | | | | | |
| | FREQUENCY RANGE | 47 ~ 63Hz | | | | | | | |
| | POWER FACTOR (Typ.) | PF>0.9/230VAC PF>0.95/115VAC at full load | | | | | | | |
| | EFFICIENCY (Typ.) | 77% | 83% | 84% | 87% | 88% | 89% | 89% | 89% |
| | AC CURRENT (Typ.) | 1.2A/115VAC 0.7A/230VAC | | | | | | | |
| | INRUSH CURRENT (Typ.) | 35A/115VAC 65A/230VAC | | | | | | | |
| | LEAKAGE CURRENT | <1mA / 240VAC | | | | | | | |
| PROTECTION | OVERLOAD Note.7 | 105 ~ 135% rated output power Protection type : Constant current limiting, recovers automatically after fault condition is removed | | | | | | | |
| | OVER VOLTAGE | 3.96 ~ 4.62V | 6 ~ 7V | 9.4 ~ 10.9V | 14.4 ~ 16.8V | 18.8 ~ 21.8V | 30 ~ 34.8V | 41.4 ~ 48.6V | 57.6 ~ 67.2V |
| | OVER TEMPERATURE (OPTIONAL) | 80°C ±5°C for 5V~15V; 85°C ±5°C for 24V~48V (TSW1 : detect on heatsink of power transistor) (optional) Protection type : Shut down o/p voltage, recovers automatically after temperature goes down | | | | | | | |
| FUNCTION | REMOTE CONTROL | RC+ / RC-: 0 ~ 0.8V = power on ; 4 ~ 10V = power off | | | | | | | |
| ENVIRONMENT | WORKING TEMP. | -20 ~ +70°C (Refer to output load derating curve) | | | | | | | |
| | WORKING HUMIDITY | 20 ~ 90% RH non-condensing | | | | | | | |
| | STORAGE TEMP., HUMIDITY | -40 ~ +85°C, 10 ~ 95% RH | | | | | | | |
| | TEMP. COEFFICIENT | ±0.03%/°C (0 ~ 50°C) | | | | | | | |
| | VIBRATION | 10 ~ 500Hz, 5G 10min./1cycle, 60min. each along X, Y, Z axes | | | | | | | |
| SAFETY & EMC (Note 4) | SAFETY STANDARDS | UL60950-1, TUV EN60950-1 approved | | | | | | | |
| | WITHSTAND VOLTAGE | I/P-O/P:3KVAC | | I/P-FG:1.5KVAC | | O/P-FG:0.5KVAC | | | |
| | ISOLATION RESISTANCE | I/P-O/P, I/P-FG, O/P-FG:100M Ohms / 500VDC / 25°C / 70% RH | | | | | | | |
| | EMI CONDUCTION & RADIATION | Compliance to EN55022 (CISPR22) Class B | | | | | | | |
| | HARMONIC CURRENT | Compliance to EN61000-3-2,-3 | | | | | | | |
| | EMS IMMUNITY | Compliance to EN61000-4-2,3,4,5,6,8,11; ENV50204, EN55024, EN61000-6-2, heavy industry level, criteria A | | | | | | | |
| OTHERS | MTBF | 394.8K hrs min. MIL-HDBK-217F (25°C) | | | | | | | |
| | DIMENSION | 129*98*38mm (L*W*H) | | | | | | | |
| | PACKING | 0.47Kg; 30pcs/ 15Kg/ 0.72CUFT | | | | | | | |
| NOTE | <ol style="list-style-type: none"> 1. All parameters NOT specially mentioned are measured at 230VAC input, rated load and 25°C of ambient temperature. 2. Ripple & noise are measured at 20MHz of bandwidth by using a 12" twisted pair-wire terminated with a 0.1uf & 47uf parallel capacitor. 3. Tolerance : includes set up tolerance, line regulation and load regulation. 4. The power supply is considered a component which will be installed into a final equipment. The final equipment must be re-confirmed that it still meets EMC directives. 5. Derating may be needed under low input voltages. Please check the derating curve for more details. 6. Length of set up time is measured at cold first start. Turning ON/OFF the power supply may lead to increase of the set up time. 7. Constant current operation region is within 75%~100% rated output voltage. | | | | | | | | |

Mechanical Specification

Case No.903D Unit:mm



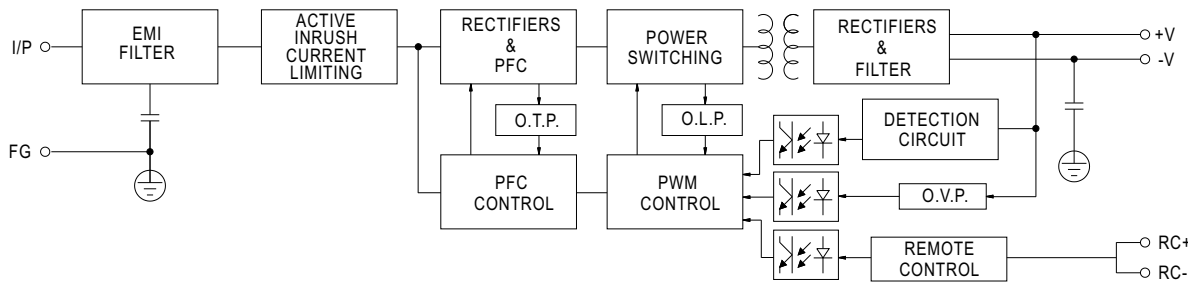
Terminal Pin No. Assignment

| Pin No. | Assignment | Pin No. | Assignment |
|---------|------------|---------|--------------|
| 1 | AC/L | 4 | DC OUTPUT -V |
| 2 | AC/N | 5 | DC OUTPUT +V |
| 3 | FG | | |

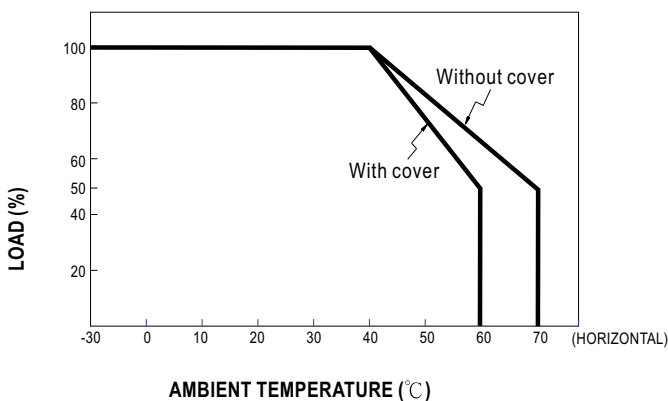
Remote ON/OFF (CN100) : JST B-XH or equivalent

| Pin No. | Assignment | Mating Housing | Terminal |
|---------|------------|-----------------------|----------------------------|
| 1 | RC- | JST XHP or equivalent | JST SXH-001T or equivalent |
| 2 | RC+ | | |

Block Diagram



Derating Curve



Output Derating VS Input Voltage

