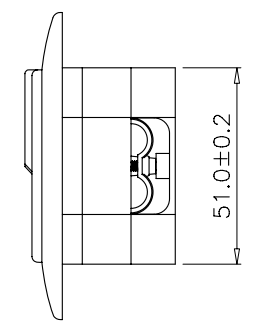
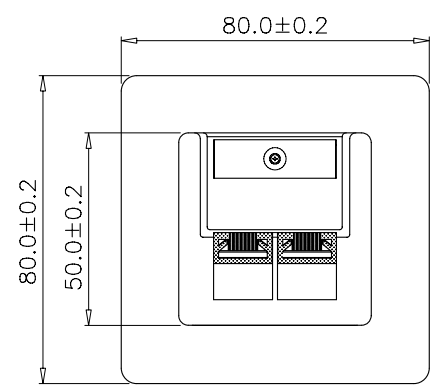
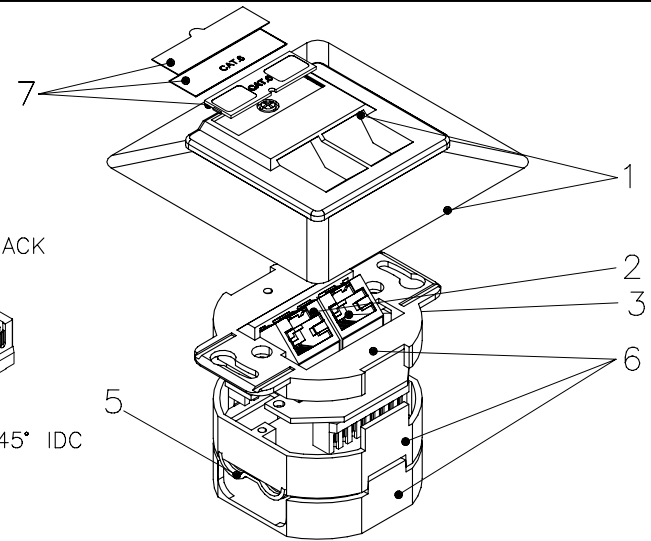
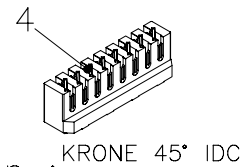
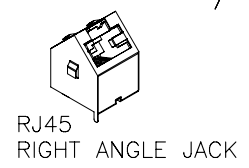


1 2 3 4 5 6

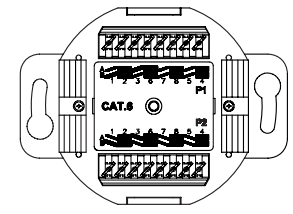
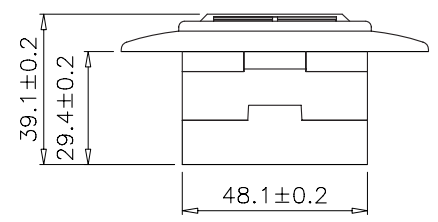
A



Specification :

B

- Material :
1. Plastic Plate : ABS, UL 94-HB, with optional color. SCALE 1/2
  2. RJ45 Jack :
    - 2-1. Housing : PBT+Glass Fiber, UL 94V-0.
    - 2-2. Contact Bracket : PBT+Glass Fiber, UL 94V-0.
    - 2-3. RJ45 Jack Shield : Bronze with Nickel plated.
  3. RJ45 Jack Contact :
    - 3-1. Material : Phosphor Bronze with Nickel plated.
    - 3-2. Finish : 50 micro-inch Gold plated on Plug contact area.
  4. IDC :
    - 4-1. Housing : PC+Glass Fiber, UL 94V-2.
    - 4-2. Terminal : Phosphor Bronze with Tin plated.
  5. Cable Clamp : SPCC with Nickel plated.
  6. Metal Cover : Zinc die-casting.
  7. Identification :
    - 7-1. I.D. Plate : PVC, Transparent color.
    - 7-2. Paper.
    - 7-3. Frame : ABS, UL 94V-0.
  8. PCB : FR4, UL 94V-0.



C

- Performance :
- a. T568A & T568B wiring.
  - b. Insertion force : 30N max. (IEC 60603-7-5)
  - c. Retention strength : 7.7 kg between Jack and Plug.
  - d. Operating temperature : -10°C to 60°C. (ISO/IEC 11801, ANSI/TIA/EIA 568 B.2)
  - e. Life(mating cycles) :
    - \* Jack : 750 cycles min. (ISO/IEC 11801, IEC 60603-7-5)
    - \* IDC : Suitable for 22-26 AWG stranded and solid wire, compatible with Krone punch down tool.
  - f. The Cat.6 transmission performance is in compliance with the ANSI/TIA/EIA 568 B.2-1 standard.

A

B

C

D

|   |                        |             |       |                               |
|---|------------------------|-------------|-------|-------------------------------|
| GENERAL TOLERANCE OF DIMENSIONS<br>X.XXX ±0.005<br>X.XX ±0.05<br>X.X ±0.1 | DRAWING                | 20.OCT.2010 | QIQI  | <p>we move the world</p>      |
|   | CHECK                  | 20.OCT.2010 | JANE  |                               |
|   | APPROVAL               | 20.OCT.2010 | JAIMY |                               |
|   |                        | DATE        | NAME  | ITEM NO.:                     |
| SCALE   | 1/2 (A4)               | UNIT        | mm    | DES.: CAT.6 FULL SHIELDED BOX |
|   | DRAWING NO.            |             |       |                               |
|   | DRAWING CLASSIFICATION |             | S     | SHEET 1 OF 1                  |

D

1 2 3 4 5 6

10cm